

SQL Azure - INTRODUCTION

- ✿ Microsoft Azure is a cloud computing platform.
- ✿ It provides the infrastructure to build, deploy and managing applications and services.
- ✿ This is made possible with a global network based data centers managed by Microsoft.
- ✿ The provide services include PaaS and IaaS
- ✿ SQL Azure extends its support to
 - ✓ Various programming languages,
 - ✓ Microsoft-specific Tools and frameworks and
 - ✓ Third-party based software's.

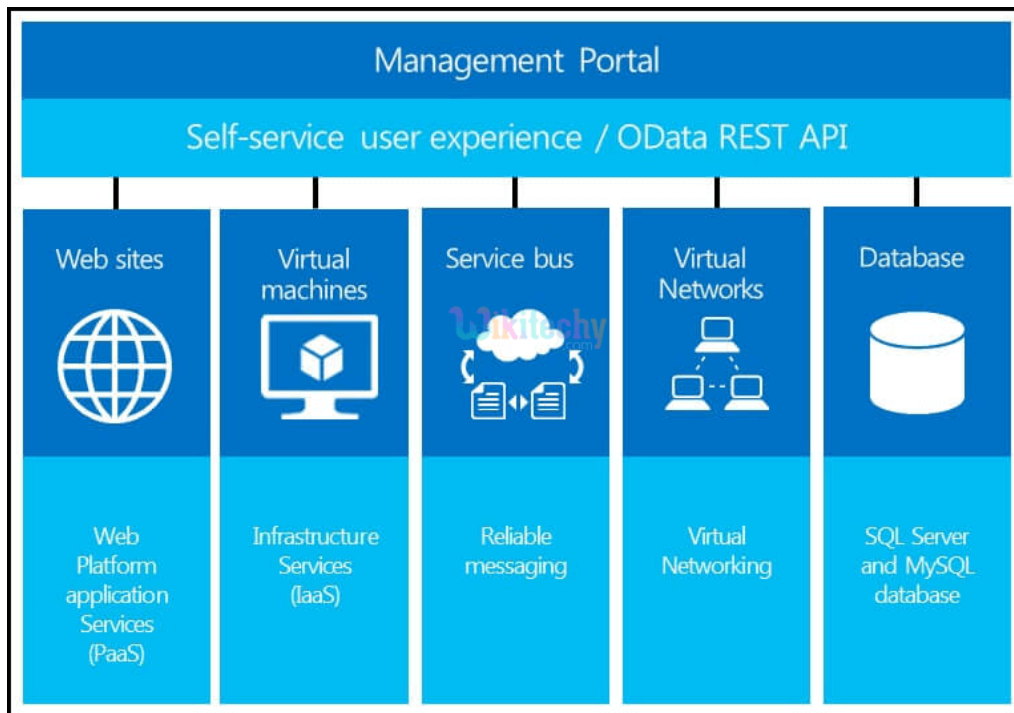


Fig1. SQL Azure Environment

Microsoft Azure SQL Database:

- ✿ It is a cloud-based service that offers data-storage facility which is part of Azure Services Platform.
- ✿ Azure SQL Database permits users to make relational queries against stored data.
- ✿ The data is stored in the form of structured, semi-structured, or even unstructured documents.
- ✿ Querying features includes data search, data analysis and data synchronization.

How SQL Azure Works:

- ✿ SQL Database uses a special version of Microsoft SQL Server.
- ✿ This special version allows storing multiple copies of databases with
 - ✓ Business continuity,
 - ✓ Disaster recovery with backups,
 - ✓ Geo-replication,
 - ✓ Elastic scale and
 - ✓ Rapid provisioning.
- ✿ Only a subset of SQL Server functionality is exposed in SQL Azure DB.
- ✿ Data types such as string, numeric, date and Boolean are supported.
- ✿ XML-based format is implemented for data transfer.



- ✱ SQL Database uses T-SQL for querying.
- ✱ Tabular Data Stream (TDS) protocol is used to access the service over the Internet.

How to use SQL Azure DB:

- ✱ Organizations can use SQL DB to build applications and transfer them to SQL Azure.
- ✱ The other way is to build applications on Windows Azure and store the data in the cloud.
- ✱ With Transact-SQL (T-SQL) query language, there is a high rate of fault tolerance.
- ✱ This eases the task of data synchronization as shown below:

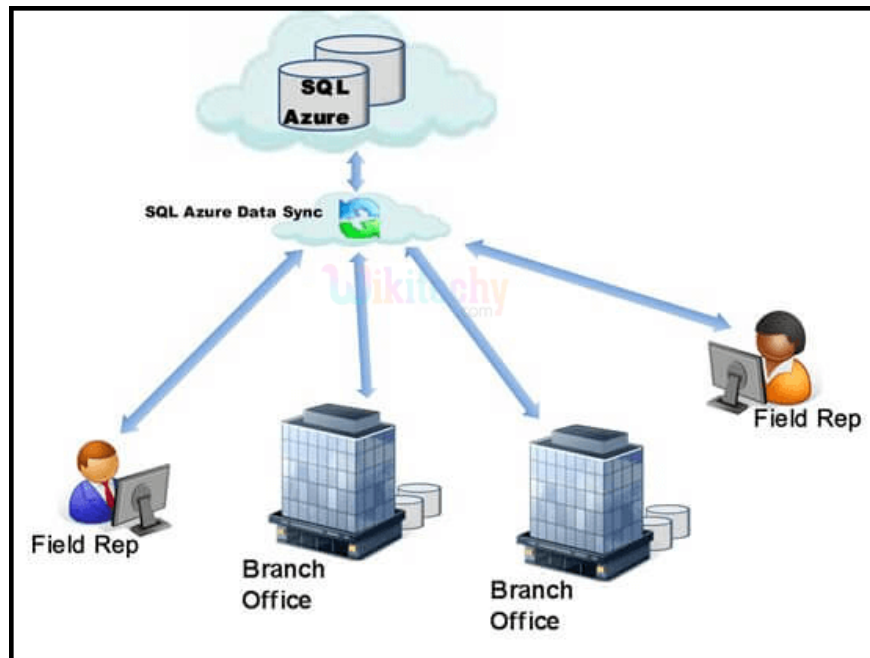


Fig2. Data Synchronization with SQL Azure

Differences in SQL Azure from SQL Server.

- ✿ SQL Azure doesn't support all T-SQL commands.
- ✿ SQL Server data types like XML or functions are not supported.
- ✿ Cross-database joins is not permitted.
- ✿ Maximum allowed database size is just 50 GB.
- ✿ The present release does not perform scheduled backups and restores.

